

# SEKSI OPERASIONAL

# **OPERASIONAL**

- **PENGOBATAN PASIEN**
- **EVAKUASI**
- **ALTERNATIF LOKASI PELAYANAN**
- **KEAMANAN PELAYANAN**
- **KEBERLANGSUNGAN PELAYANAN RS**

**KETUA**

**HUMAS**

**LIAISON**

**KEAMANAN**

**PENASEHAT MEDIS**

**LOGISTIK**

**PERENCANAAN**

**KEUANGAN**

**OPERASIONAL**

**FASILITAS**

**SITUASI**

**PENGADAAN**

**YAN MEDIS**

**YAN PENUNJANG**

**YAN SOSIAL**

**ASESMEN KERUSAKAN**

**PENYEDIAAN TENAGA**

**PEMBEAYAAN**

**IN-PATIENT**

**TREATMENT**

**LAB**

**DUKUNGAN PETUGAS**

**SANITASI**

**TENAGA MEDIS**

**KLAIM**

**BEDAH**

**TRIAGE**

**RAD**

**DUKUNGAN PSIKOLOGIS**

**KOMUNIKASI**

**KEPERAWATAN**

**ADMIN**

**IBU & ANAK**

**TINDAKAN SEGERA**

**FARMASI**

**TRANSPORTASI**

**PATIENT TRACKING**

**CRITICAL CARE**

**TINDAKAN TUNDA**

**TINDAKAN MINOR**

**PENYEDIAAN MATERIAL**

**INFORMASI PASIEN**

**WAT UMUM**

**DISCHARGE**

**JENAZAH**

**TIM LAPANGAN**

**PENYEDIAAN MAKANAN**

**OUT-PATIENT**

# PELAYANAN MEDIS

## ■ Mission :

**"organize and direct the overall delivery of medical care in all areas of the hospital".**

**This is a large order, but you will have an In-Patient Areas Supervisor and Treatment Areas Supervisor to assist you in your duties.**

**■ You have two pieces of information which you must know as soon as it is possible :**

**1) what is the condition/status of the in-patient areas, and;**

**2) are the special treatment areas being established/staffed to receive the eventual rush of new patients from the community?**

**■ To help you realize your mission, you will stay in close contact with :**

**- The Medical Staff Director to obtain proper physician staffing, and**

**- the Labor Pool/Nursing Unit Leaders.**

**- face-to-face contact with all your branch personnel**

- Since the Operations Section actually represents the essence for the hospital's existence (medical care), the other three sections must be kept appraised of the Operations Section activity.
- **You are expected to "think ahead" and project the needs of the two subsections assigned to your charge.**

# IN-PATIENT

## ■ Mission :

- to assure the continued, quality treatment of the hospital's in-patients, and

- to provide for an organized, orderly discharge of patients.



# **SURGICAL SERVICES**

## **■ Mission :**

- to supervise and maintain the surgical capabilities at the maximum possible level**

- to care for the in-patients and those patients who will be arriving shortly.**

# MATERNAL-CHILD

## ■ Mission :

- to supervise and maintain the obstetrical, labor & delivery, nursery, and pediatric services at the maximum possible level

- to care for the in-patients and those patients who will be arriving shortly.

# CRITICAL CARE

## ■ Mission :

- to supervise and maintain the critical care capabilities to the maximum level
- to care for the in-patients and those patients who will be arriving shortly.

# GENERAL NURSING CARE

## ■ Mission:

- to supervise and maintain general nursing services to the best possible level
- to meet the needs of in-house and newly admitted patients.

# OUT PATIENT SERVICES

## ■ Mission :

- to prepare any out patient service areas
- to meet the needs of in-house and newly admitted patients according to the direction of the In-Patient Areas Supervisor.

# TREATMENT

## ■ Mission:

**- to initiate the set-up and supervise the patient triage and treatment process in the specialty areas assigned to your supervision.**

**■ You have three immediate priorities:**

**1) to appoint the six unit leaders under your direction,**

**2) to locate and ensure the opening of the special triage/treatment areas, and**

**3) to ensure that the personnel staffing/material requests are immediately made to the Labor Pool and Materials Supply Unit.**

# TRIAGE

## ■ Primary mission :

- to ensure the rapid triage of all incoming patients, and
- promote their disposition in a timely manner, to : IMMEDIATE TREATMENT, DELAYED TREATMENT, or MINOR TREATMENT



# DISCHARGE

## ■ Mission :

- coordinate the controlled discharge, of patients received from all areas of the hospital.

- facilitate the process of final patient disposition by assuring adequate staff and supplies in the Discharge Area.

# MORGUE

## **Mission :**

- Collect, protect and identify deceased patients**
- assist Discharged Area Unit Leader in appropriate patient discharge**

# ANCILLARY SERVICES

## ■ Mission :

- to organize and manage the ancillary medical services

# LABORATORY

- Consider current needs, as well as planning ahead for future operations.

# RADIOLOGY

## ■ Mission :

- to manage all diagnostic imaging services, and
- to maintain the optimum levels of service possible.

# PHARMACY

## ■ Mission :

- to ensure the availability of incident specific pharmaceuticals.
- consider current needs, as well as planning ahead for future operations.

# HUMAN SERVICES

## ■ Mission :

- to organize, direct and supervise those services dealing with the psycho-social needs of the patients and staff alike.
- to take an active role in the discharging of patients.
- look ahead and make plans to continue your mission in 10 hours, or 10 days if necessary.

# STAFF SUPPORT

## ■ Mission :

- to see that provisions are made for the logistical and psychological support of the employee.
- to establish a rest and relaxation area for the hospital employees



# PSYCHOLOGICAL SUPPORT

## ■ Mission :

- to see that provisions are made for the psychological support of the employee.
- dealing with the psycho-social needs of the patients
- to take an active role in the discharging of patients

# TIM LAPANGAN

- **team composition (by speciality)**
- **team commander**
- **who can activate teams**
- **medical equipment**
- **protective clothing**
- **communications**
- **situation reports to the hospital**
- **transport arrangements**

**CROSS WALK**

**KETUA**

**HUMAS**

**LIAISON**

**KEAMANAN**

**PENASEHAT MEDIS**

**LOGISTIK**

**PERENCANAAN**

**KEUANGAN**

**OPERASIONAL**

**YAN MEDIS**

**YAN PENUNJANG**

**YAN SOSIAL**

**IN-PATIENT**

**TREATMENT**

**LAB**

**DUKUNGAN PETUGAS**

**BEDAH**

**TRIAGE**

**IBU & ANAK**

**TINDAKAN SEGERA**

**CRITICAL CARE**

**TINDAKAN TUNDA**

**WAT UMUM**

**TINDAKAN MINOR**

**OUT-PATIENT**

**DISCHARGE**

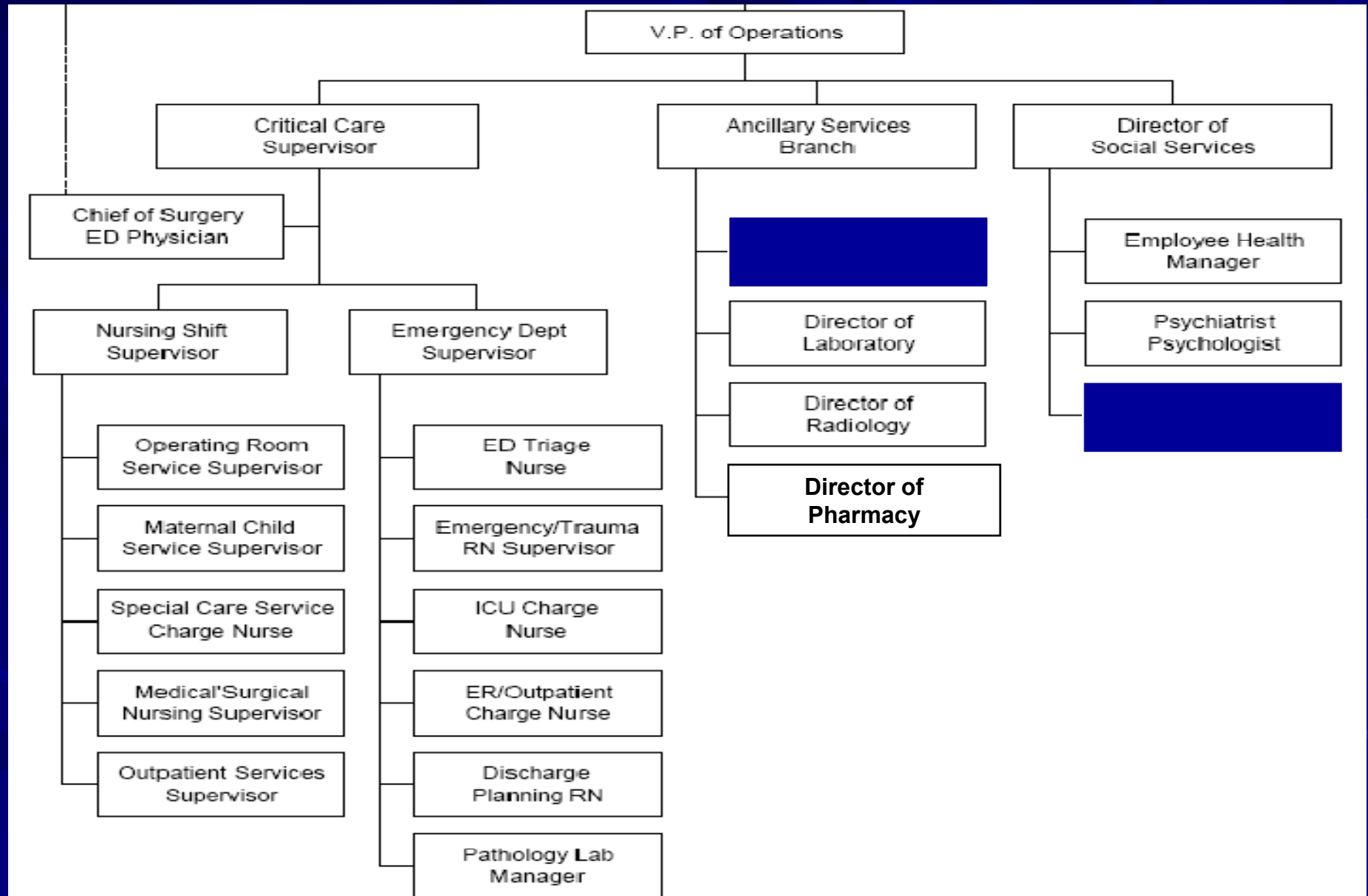
**JENAZAH**

**FARMASI**

**DUKUNGAN PSIKOLOGIS**

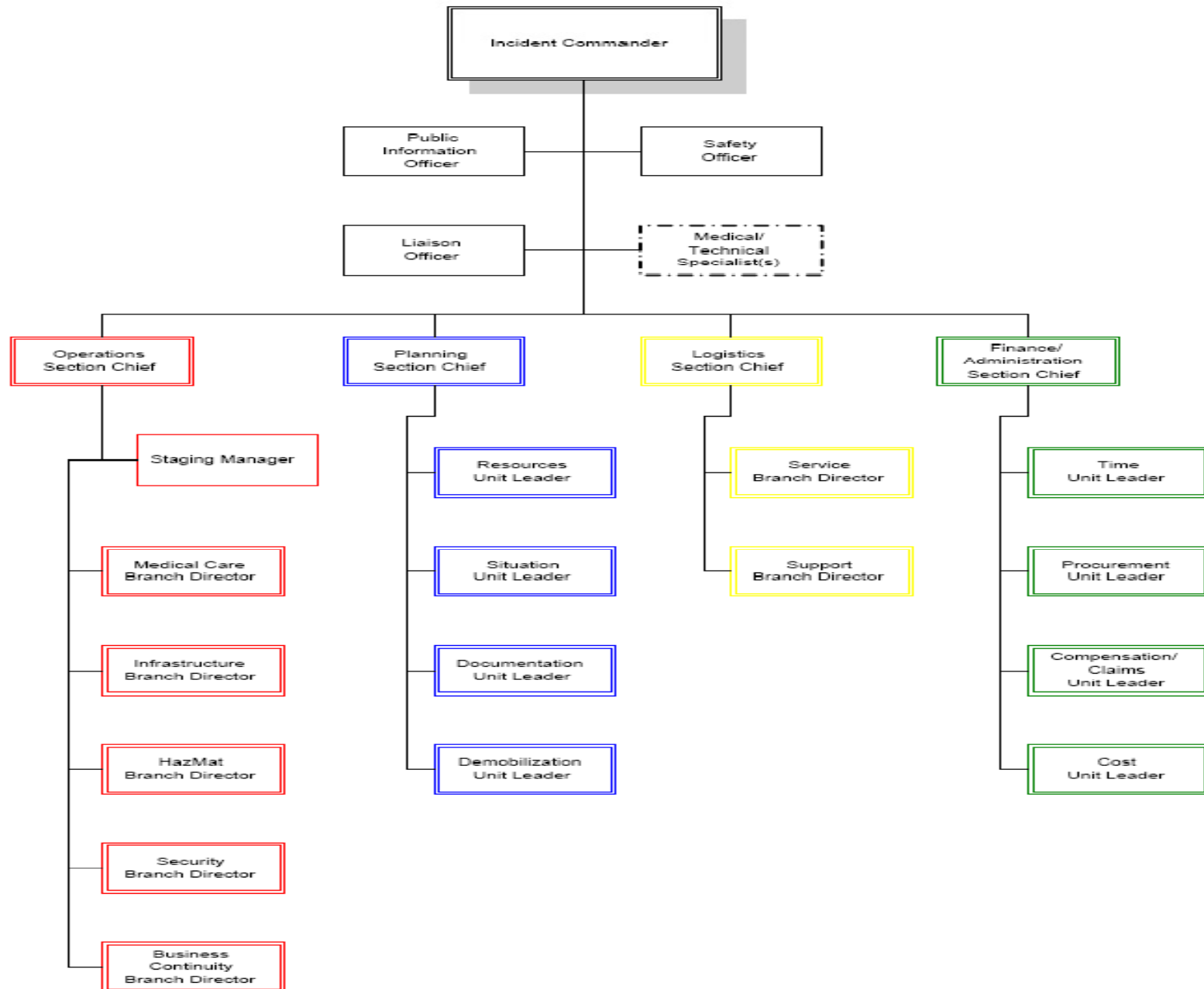
**TIM LAPANGAN**

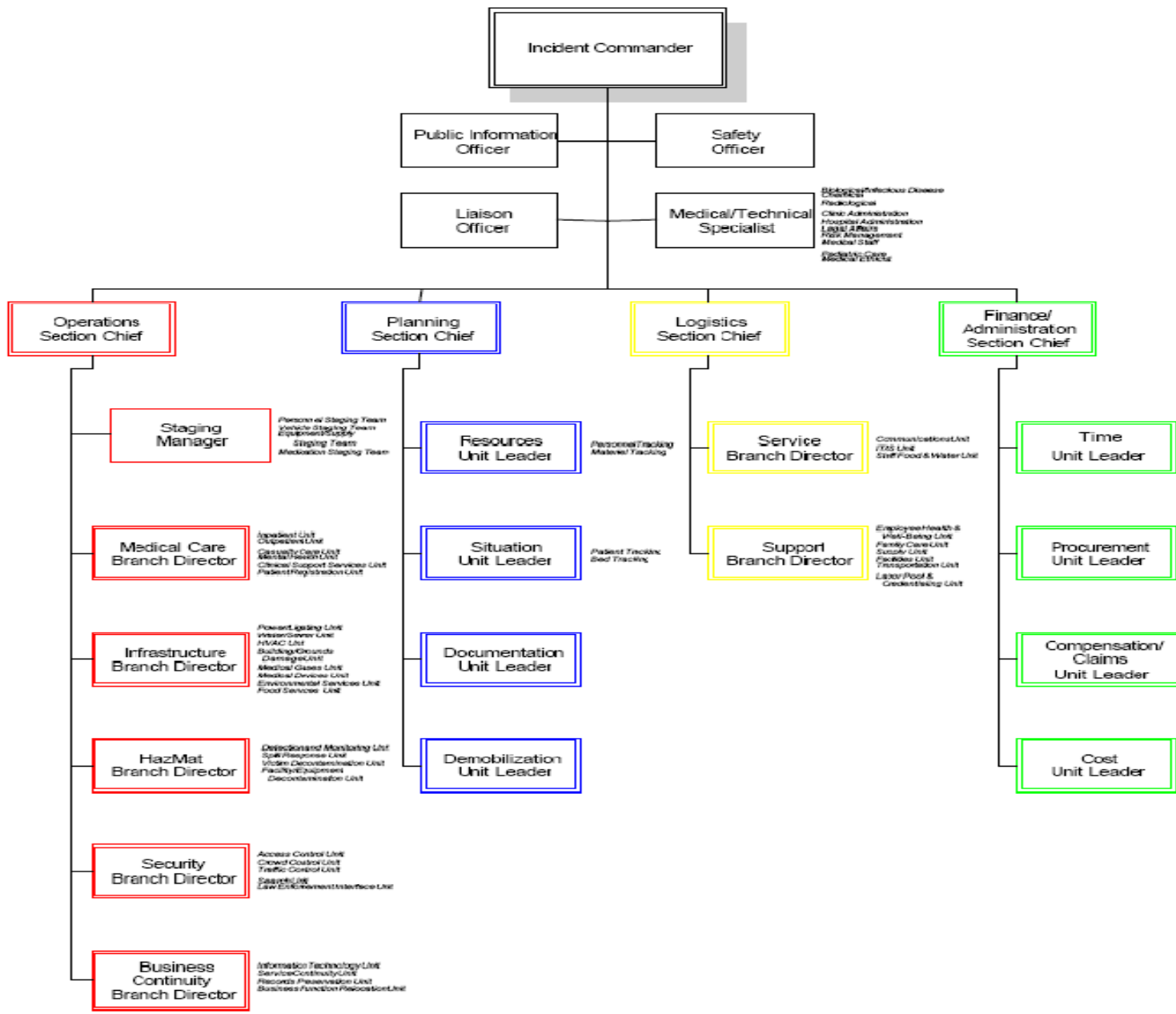
# ORGANIZATIONAL CHART CROSS WALK



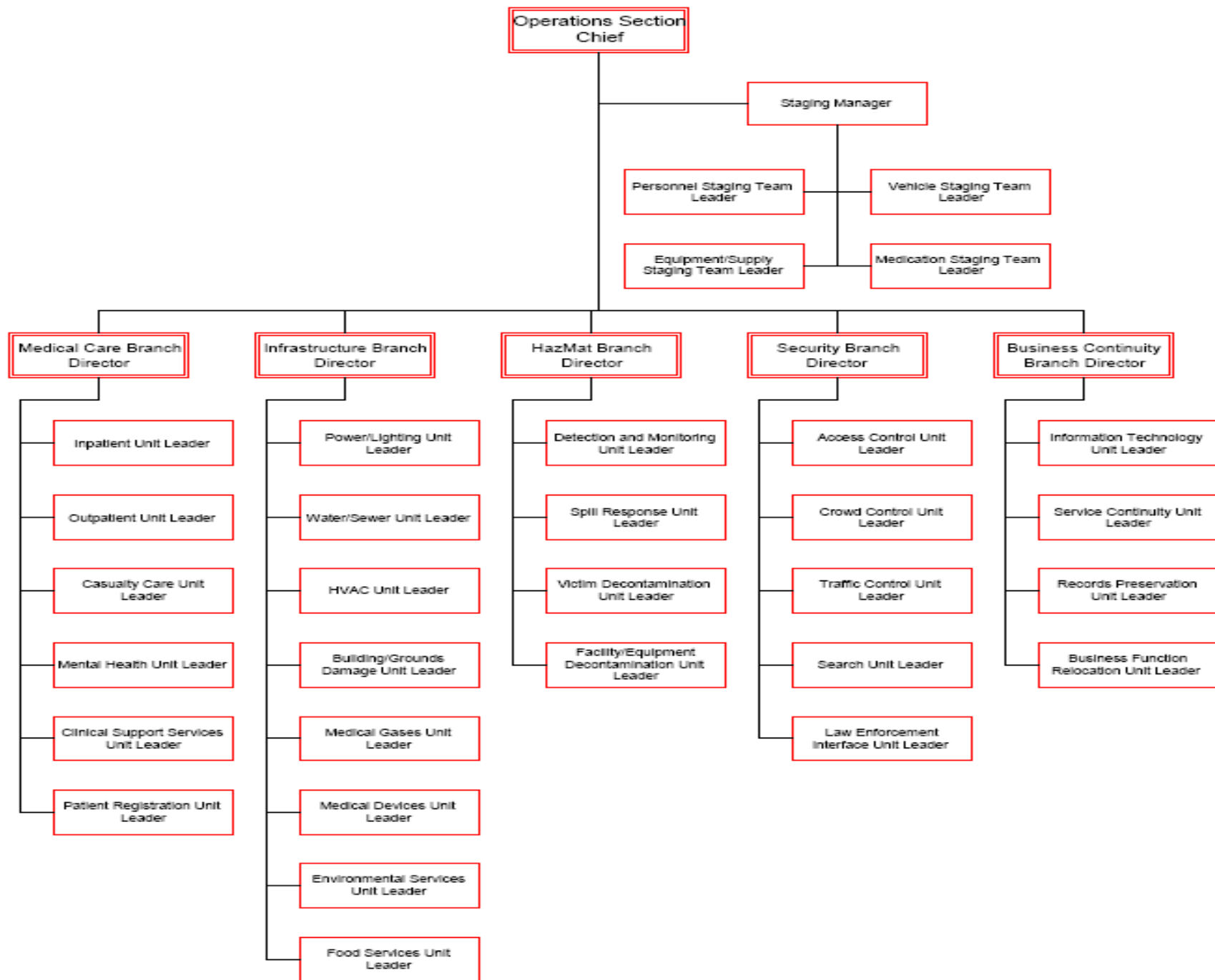
The background is a solid dark blue color with a pattern of diagonal lines in various shades of blue, creating a sense of depth and movement. The lines are most prominent on the right side and fade towards the left.

**HICS**

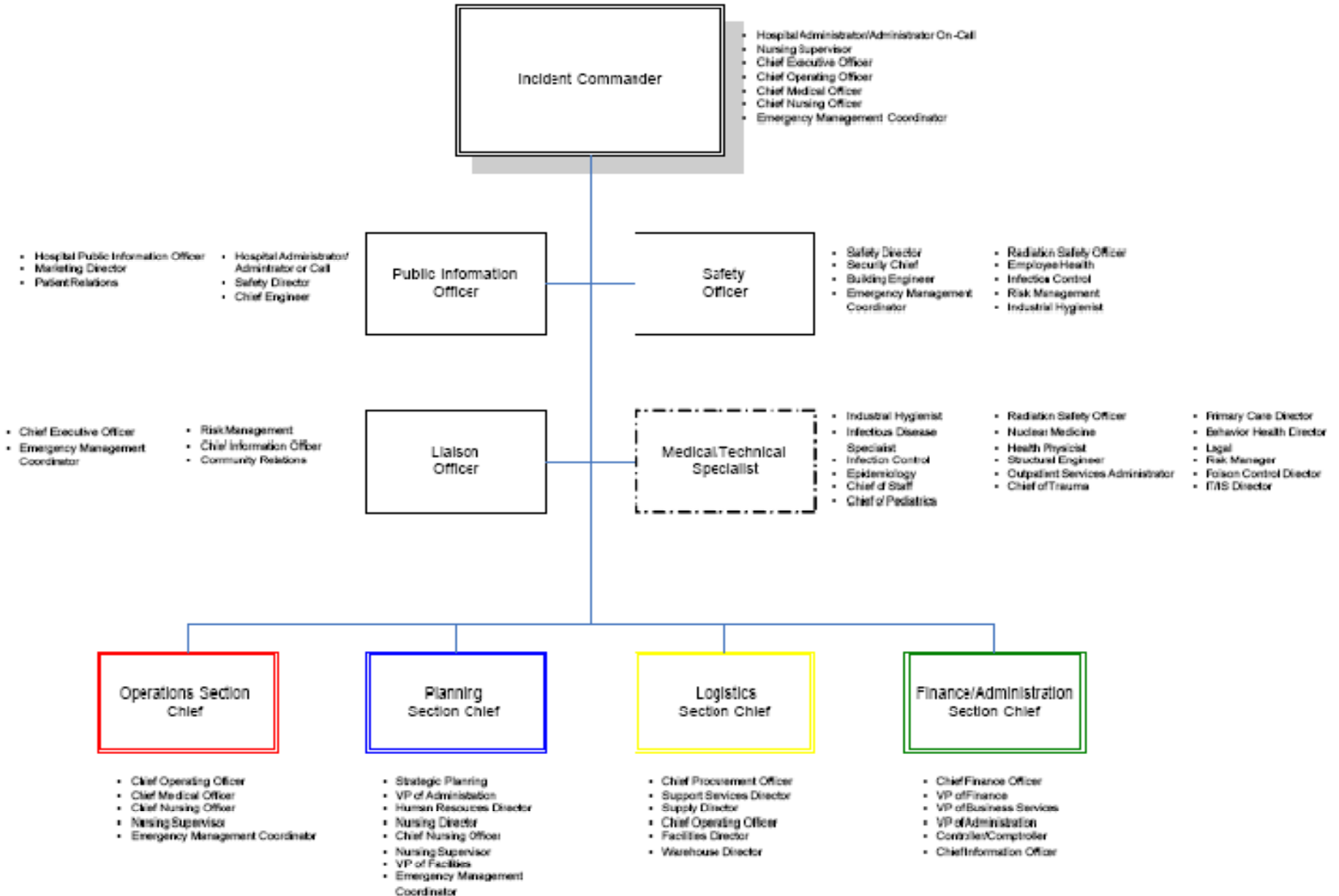








# Potential Candidates for HICS Command Positions



**TERIMAKASIH**